

A POSY PICKER'S PAPER

New Meadows Garden Club

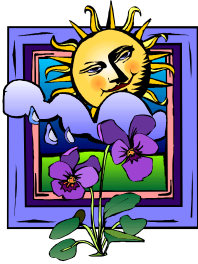
Topsfield, Massachusetts

February 26th through March 26, 2013



REALLY????? AGAIN????
Come on, give us a break!

February 26



Our monthly meeting will be held at the home of Georgia McHugh at 1 pm. Please note that this is a change in time. Georgia, our club's artistic expert extraordinaire, will be presenting a demonstration not to be missed, "Designing Arrangements to Complement Art." Not only will Georgia's presentation be entertaining, but it will provide many useful tips for members, as the club prepares for its program *Art in Flowers* at the Topsfield Library in April. Please rsvp to Mary Connor as soon as possible so that we will know how many will be attending. For instructions, please refer to your last Posy Picker edition, January 2013.

However, please note that there are only about six off-street parking places in Georgia's driveway. Street parking will be near impossible, especially if we receive additional snowfall. Carpooling is strongly suggested. For carpooling, please meet at the Gould Barn parking lot no later than 12:30 pm.

Also, in the event of inclement weather, please check your e-mail messages for any change in arrangements for this meeting!

March 5



The North Andover Garden Club has invited our members to a "Seedlings for Salads Workshop" to be held at St. Michael's Parish Hall, Main Street, North Andover from 7 pm to 9 pm. This hands-on workshop will be presented by Master Gardener Laurel Landers. Bring your own containers, baskets with liners and seedling trays. You will be able to start greens as well as perennials and annuals. This workshop is free of charge, and seeds and soil will be provided.

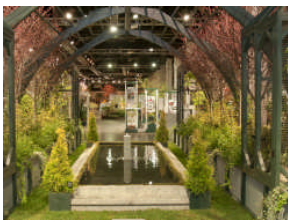
March 12



The North Andover Garden Club has invited our members to yet another exciting, free event "Gardens to Visit in New England" at St. Michael's Parish Hall, Main Street, North Andover from 7 pm to 9 pm. The editor of "People, Places and Plants", Laura Eisener, who also teaches at the Arnold Arboretum Landscape Design Institute at Harvard, will be presenting this program. Her extensive handout will serve as a guide for many weekend outings!

...more news on the following page...

March 13-17



*The Boston Flower & Garden Show returns to the Seaport World Trade Center in Boston. The theme – **Seeds of Change** – will showcase how the region's best green thumbs are fearlessly embracing new plants, methods and materials to increase the beauty, the bountiful harvest and the ecological friendliness of their gardens and outdoor spaces. Hours are 10 am to 9 pm Wednesday through Friday, 9 am to 9 pm on Saturday and 9 am to 6 pm on Sunday. Tickets are \$20 for adults, \$17 for seniors, and \$10 for children 6-17. Children under 6 are free. Tickets may be purchased at the box office or online except for senior tickets, which must be purchased at the box office since ID is required.*

March 19

Our next board meeting will be held at 9:30 am at the home of Joline Yeaton.

March 26



Our club meeting will be held at the Gould Barn, Topsfield at 9:30 am. This will be our Horticulture meeting, and will feature our very own Rose Ann Waite, who will lead us in a workshop to create our very own Pot-et-Fleur. Details on what plants, containers and tools to bring will be sent to you soon, so don't forget to check your messages! If you play your cards right, you will be able to create a beautiful centerpiece for your, or your host's, Easter table!*

**So what is "Pot-et-Fleur" anyway, you ask??? Well, here is what you need to know: Pot-et-Fleur is the art of combining cut flowers, foliage and houseplants to create indoor displays. This style of flower arranging goes back to Victorian times when tiered centerpieces, filled with potted maidenhair ferns, ivy garlands, cut flowers and even fresh fruit graced dining tables, sideboards and entrance halls. Examples of this style of flower arranging are included here for you to see!*



...more on the following page...

NOTES



Isn't amazing, isn't it, how fast time seems to pass for us? The Northern District Annual Meeting is fast approaching, and for those members interested in attending with our club officers, it is almost time to register! This year's meeting will be held at the Andover Country Club, 60 Canterbury Street, Andover on April 15th. The deadline for registration is April 5, 2013. A registration form appears on the last page for your convenience.

****Also, you have an opportunity to take part in an exciting Floral Exhibit to be featured at this meeting. Details and sign up instructions appear below for your convenience. Please note that the deadline for signing up to participate is March 22, 2013.*

PLEASE JOIN US FOR "FUN WITH FASHION & FLOWERS" AT THE ANDOVER COUNTRY CLUB FOR THE NORTHERN DISTRICT ANNUAL MEETING ON APRIL 15, 2013

This is an open invitation to any member of a Northern District Club who would like to take part in an exciting Floral exhibit. Flowers and Fashion go hand-in-hand and there is certainly no better combination!

Arrangements can compliment a textile, quilt, scarf or even the outfit you might be wearing that day. A hat, purse, gloves, shoes, etc. are a few more ideas you could use for your design. You could also go the Artistic Crafts way and create your own jewelry with flowers.

Floral materials may be dried or fresh. Exhibits can be made on site or beforehand, they can be delivered at the ACC between 8:00AM-9:00AM. An index card with list of materials and exhibitors name and garden club should accompany design. Number of exhibitors 12.

Sign-up Deadline is March 22, 2013

If you would like to take part in 'FUN WITH FASHION & FLOWERS' please send me the information below:

NAME _____
EMAIL ADDRESS _____
ADDRESS & PHONE # _____
GARDEN CLUB _____

If you are interested in participating, please contact Bonni Asbjornson, ND Director, at 978-692-8685 or asbjornson@comcast.net.

...Bits and pieces...

As you can see, even though we haven't gotten together as a club since our Holiday Social, our board has been very busy. Here is Co-Vice President, Mary Connor, conducting our February board meeting in President Judy's absence from the area.



...Green Thumb follows...

Green Thumb Corner



Okay, so we aren't as young as we used to be, right? As we look out our windows on these wintry days, pining to be in our gardens, here are a few planning tips to make our yards more "user friendly" as the years pass:

*Rather than steps in your landscape, why not choose **gentle slopes** where you can. It will be easier to go up gradual slopes with garden paraphernalia. Your slope should be no more than a foot elevation change for a distance of 12 feet.*

*And, by all means, think slip-resistant when constructing paths in your garden. Choose **regularly shaped stepping-stones** with a bit of surface grit. It is good to fill spaces between stepping-stones with pea gravel, which has been well compacted, instead of groundcovers or grass, which can be slippery.*

*To lessen the amount of bending and kneeling you must do to tend to your plants, **consider gardening in raised beds and tall containers, and on trellises and fences.** Also, be sure to keep your beds narrow enough so you can reach the center easily. Plan for access from all sides.*

*If you find yourself doing a lot of hand watering in your yard, **do plant thirsty plants close to the house!***

*And, **install pavers or other comparable material where flower beds and lawn meet to keep invasive grass runners at bay, and make edging easy.***

Happy Gardening, no matter how many years happy years you have seen!



***Time to listen up!! Here is some important information about impatiens plants passed on to us by our member, Jean Hampton.** As spring approaches, many home gardeners think about planting common impatiens plants (Impatiens walleriana). Who wouldn't? These plants ask very little, and thrive in shade, which is plentiful in our tri-town area. However, for those of you who planted them last year, try to*

*think back at how well they did in your garden and containers. If you are like very many who planted them, the plants withered before their time and died for no apparent reason. The cause...**impatiens downy mildew** (Plasmopara obducens), which has plagued these plants for the past several years in England, Europe, Africa, Australia and Asia. It has now been found in coastal Southern California, the upper Midwest, Florida and here in the Northeast.*

***Warning signs of the disease are stunted growth, pale colored leaves, and leaf and flower drop.** If you peek under the leaves, you will see a white, downy growth. All of this eventually leads to a total collapse of the plant. The bad news is that the spores reproduce like rabbits and, since it is possible for airborne spores to travel on wind currents, this disease has easily spread and has become a global problem!*

***Here are some additional points about this disease:** it is specific to common Impatiens, does not affect New Guinea Impatiens or SunPatiens, and cannot spread to other plants in the garden. The disease thrives in cool, damp conditions, and doesn't like hot temperatures or dry conditions. The disease does stay in the soil, perhaps as long as eight years, so it is imperative to remove infected plants and debris quickly and, if you decide to plant common Impatiens again this year, choose a different location in your garden. If you use these plants for container gardening, replace the soil in the container. And, make sure to clean your garden tools with soap and water. To be extra safe, tools can also be disinfected with a solution of 10 percent liquid bleach and water.*

*If you just cannot do without planting common Impatiens in the spring, watch your plants carefully, and if you suspect that the disease is present, do not try to cure the plants with fungicides, which are not terribly effective in this instance. It is best to pull the plants up without delay and dispose of them in sealed bags...**DO NOT COMPOST!***

Personally, rather than planting common Impatiens this year, I will consider planting New Guinea Impatiens or Begonias!

NORTHERN DISTRICT ANNUAL MEETING REGISTRATION
Monday, April 15, 2013
The Andover Country Club, 60 Canterbury Street, Andover, MA 01810



Name _____

Address _____

City/State/Zip _____

Telephone _____

Email _____

Club _____

8:00 – 9:00AM Registration, Coffee, & Boutique Shopping

9:15 AM Welcome & Introductions

“Fun with Fashion & Flowers”

Showcasing Arrangements by Northern District Members

With Commentary & 2 Designs by Marisa McCoy

11:15 AM Boutique Shopping

12:00 Noon Luncheon

12:45 PM Awards & Installation of New Northern District Director

2:00 PM Final Registrar Report & Raffle

2:15 PM Adjournment

Registration Number at \$40.00/person ____

Luncheon Choices Chicken Marsala ____ Broiled Haddock ____ Vegetarian ____

Please make checks payable to: GCFM

Mail to: Judy Blackburn
100 Windsor Dr.
Tewksbury, MA 01876

Phone: (978) 640-0554

Registration Deadline April 5, 2012