

# A POSY PICKER'S PAPER

New Meadows Garden Club

Topsfield, Massachusetts

January 15th through February 26, 2013



*Hurray! Shoveling snow  
burns more than 400 calories  
per hour! Bring it on!*

Happy New Year one and all!

February 12



*The North Andover Garden Club has invited our members to attend their program “Beautiful Blooms, Fabulous Foliage” presented by Gail Anderson. You will learn to use your camera to capture memorable moments in your garden as well as gardens you visit. The meeting is free and open to all, and will be held at the St. Michael’s Parish Hall, 196 Main Street, North Andover at 7 pm.*

February 19

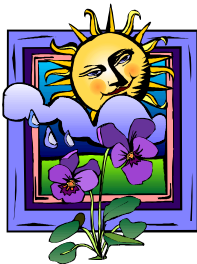
*Our next board meeting will be held at 9:30 am at the home of Rose Ann Waite.*

February 25



*Horticulture Morning will be held at South Church, 41 Central Street, Andover at 10 am. Wanda Macnair will be presenting her program “Bring the Rainforest Indoors: Terrariums”. This meeting is open to all members of our club and their guests, and a donation of \$5.00 is requested at the door.*

February 26



*Our monthly meeting will be held at the home of Georgia McHugh at 1 pm. Please note that this is a change in time. Georgia, our club’s artistic expert extraordinaire, will be presenting a demonstration not to be missed, “Designing Arrangements to Complement Art.” Look for more details soon, and please rsvp to Mary Connor as soon as possible so that we will know how many will be attending.*

...more news on the following page...

## NOTES



*As most of you know, this is the time of year during which our club provides arrangements for the librarian's desk at the Topsfield Library. For your convenience, here from our Artistic Committee is the schedule for our remaining weeks:*

*Monday, January 28th...Rose Ann Waite  
Monday, February 4th ...Nat Anderson  
Monday, February 11th...Helen Gaffey  
Monday, February 18th...Lorraine Crosson  
Monday, February 25th...Tamalyn Glasser*

*Monday, March 4th ...Barbara Shade  
Monday, March 11th...Mary Connor  
Monday, March 18th...Rita Galvin  
Monday, March 25th...Claudette Poor*

### Scholarships available from the Garden Club Federation of Massachusetts

*Awards and Scholarship Co-Chair, Barbara Shade, reports the deadline is March 1st for applications for scholarships for students who are Massachusetts residents majoring in agronomy, biology, botany, city planning, conservation, environmental studies, floriculture, forestry, horticulture, land management, landscape design and related subjects. Applications are available on the GCFM website at <http://www.gcfm.org>. For more information, please refer to Barbara's e-mail communication of January 24th, which was sent to all club members. Please pass this information along to any students you know who might be eligible and interested.*

### *...Bits and pieces...*



*Here at the piano are Honorary Members, Bill & Betty Flagg*



*A good time was had by all at our Holiday Social!*



*Members wish Helen Gaffey a Happy Birthday!*



*Jean Bilsbury leads our first "seated" gift exchange!*

*...more on the following page...*



*Here is our holiday decorations cleanup crew at the Topsfield Library*

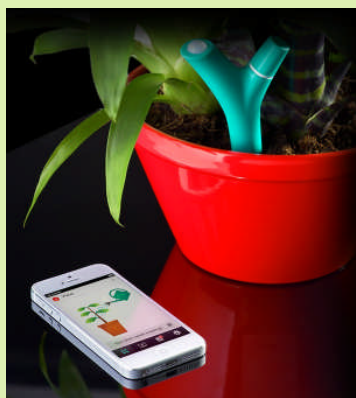


*Co-Vice President Helen Gaffey runs her first board meeting in January!*

## **Green Thumb Corner**

### **Dedicated App for Bluetooth® Smart Ready Smart-phones and tablets**

Push notifications remind you of your plant's needs!



*...from R&D Magazine*

*Just when you thought you heard everything! Here is something you “brown thumbs” out there can’t live without...*

#### **Parrot Flower Power**

A company named after a bird wants to make life easier for your plants. A plant sensor called Flower Power from Paris-based Parrot is designed to update your mobile device with a wealth of information about the health of your plant and the environment it lives in. Just stick the y-shaped sensor in your plant's soil, download the accompanying app and—hopefully—watch your plant thrive.

"It basically is a Bluetooth smart low-energy sensor. It senses light, sunlight, temperature, moisture and soil as well as fertilizer in the soil. You can use it either indoors or outdoors," said Peter George, vice president of sales and marketing for the Americas at Parrot. The device will be available sometime this year, the company said.

**WHAT IT'S FOR:** 'Brown-thumbbed' folk and plants with a will to live.

**PRICE:** Unknown.

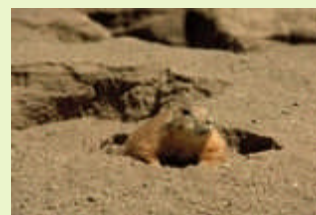
*...continued on the next page...*



*We haven't had a lot of snow yet, but as we all know, the winter is far from over! If we do have a sizable storm, it is a good idea to relieve your trees and plants from the heavy snow that may be weighing them down. Here's a useful tip: don't knock the snow down...brush it up. Carefully insert a rake or a broom under the branches*

*and draw it up and out. This will support some of the weight as the snow falls to the sides. If you tap the branch from above, the chances are greater that you will break the limbs with the impact. And, if you have a heavy layer of ice instead of snow, it is best to prop branches with anything you can find... lawn chairs, upended rakes, forked branches, ladders...let your imagination run wild!*

*The excitement is quickly mounting ...Groundhog Day is just around the corner! So here's everything you ever wanted to know about this popular tradition in the United States, which will take place on February 2nd this year. The legend has been around for centuries, with ethnic cultures and animals awakening on specific dates. As you may already know, it is on this day that the groundhog comes out of his hole*



*after a long winter sleep to look for his shadow. If he sees it, it is regarded as an omen of six more weeks of winter and so he goes back into his hole for a bit more sleep! If he does not see his shadow, perhaps if it is a cloudy day, this is regarded as a sure sign that spring is just around the corner. In this case, he stays above ground to celebrate!*

*The Groundhog Day tradition stems from similar beliefs associate with Candlemas Day in the early days of Christians in Europe. For centuries it was the custom for clergy to bless candles and distribute them to the people. Even then, it marked a milestone in winter and the weather that day was significant. There is an old English song whose lyrics go as follows:*

*If Candlemas be fair and bright,  
Come, Winter, have another flight;  
If Candlemas brings clouds and rain,  
Go Winter, and come not again.*



*With so little going on during winter in these parts, simply feeding the birds who join us in our barren winter landscape may become a major pastime! Here's a tip to ensure that birds flock to your feeders: take care that you have staging areas nearby so that birds are able to stop in their approach to scope out a feeding station. This enables birds to be*

*reasonably sure there are no predators in the area and that the coast is clear. Small trees, bushes and hedges are good examples. In my yard, a large holly bush outside my kitchen window serves this purpose. Birds are discouraged from feeding when the surrounding yard is laid bare. So, when placing your feeders, keep this in mind, as well as your line of sight to the feeder, so you don't miss out on the action...this may be your greatest opportunity for excitement all winter!*

*...And one last tip for today...according to the Umass Extension, "Deer Ticks overwinter as adults and can attach to hosts at anytime they are not covered with snow. Frosts or cold weather do not kill ticks." This is news to me! So, if you are working outside even during winter months, be sure to check yourself for ticks, especially during winter thaws and mild spells. This goes for your pets as well!*